

# Accu-Chek Aviva Nano. Small in size. Big in performance.



Now with practical permanent coding – ready for instant measuring!

The black activation chip (with number 112 as standard) is already in the Accu-Chek Aviva Nano blood glucose meter and can remain there permanently. The meter now codes itself automatically.

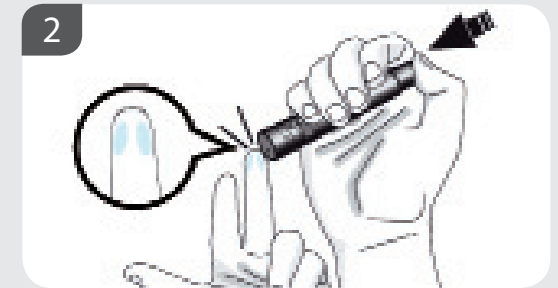
For further instructions on handling please watch the product video at [www.accu-chek.de/nano](http://www.accu-chek.de/nano) or the package insert.

## Testing for blood glucose



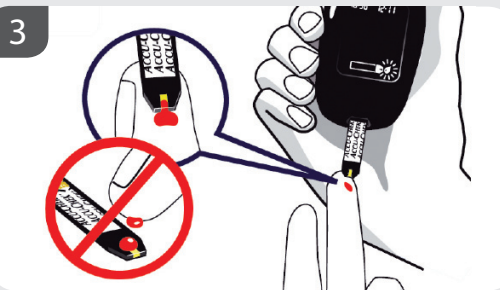
### 1 Insert a test strip

Insert the test strip into the meter in the direction of the arrow until you hear a signal. The code will be displayed briefly, followed by the flashing icon of a blood drop.



### 2 Taking a blood sample

Obtain a drop of blood from the side of your fingertip using the lancet (brief instructions on back).



### 3 Applying blood

Touch the blood drop with the end of the test strip. Do not put blood on the top of the test strip.



### 4 Reading the value

The test strip has absorbed sufficient blood as soon as the signal sounds and the hour glass starts to flash. The value appears on the display after 5 seconds.

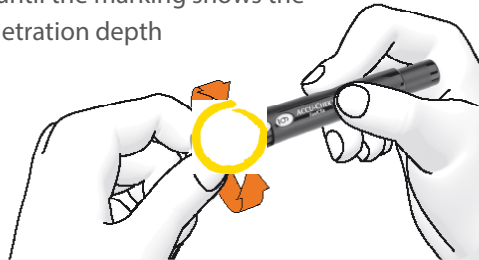
# Accu-Chek FastClix. Obtain blood in just 1 click.

## Preparation



## Adjusting penetration depth

Rotate cap until the marking shows the desired penetration depth

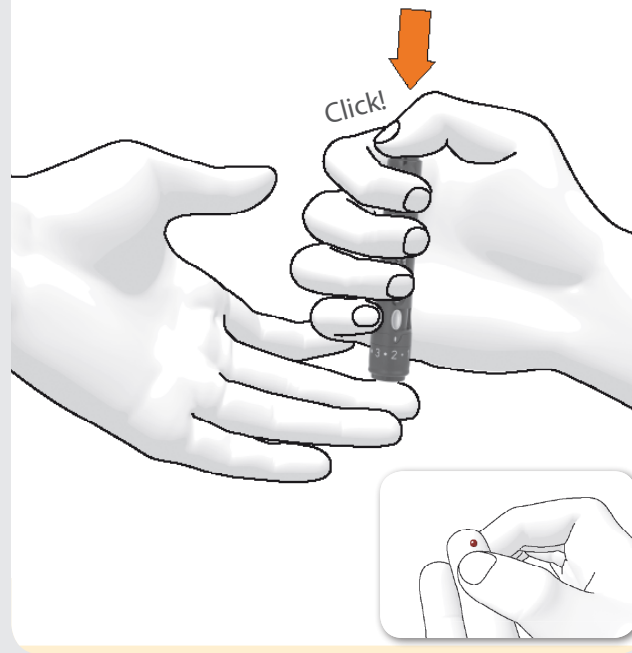


## Obtaining blood: just 1 click!

### Taking a blood sample

Press plunger down completely

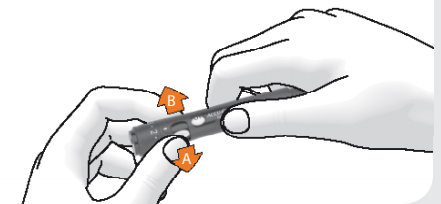
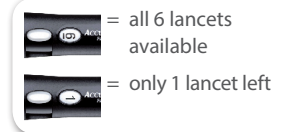
Just 1 click  
for priming and  
triggering



## Next step

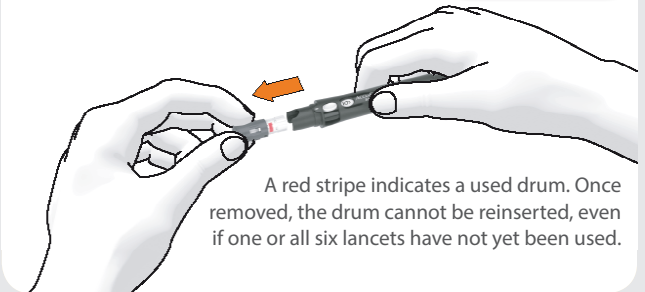
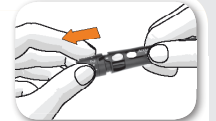
### Load a new lancet

Turn lever in direction A to the stop and then back in direction B.



### Remove used lancet drum

Remove cap and pull out the drum



Experience what's possible.

ACCU-CHEK, ACCU-CHEK AVIVA NANO and FASTCLIX are Roche trademarks.  
© 2013 Roche Diagnostics. All rights reserved.

### You would like to know more?

Our staff at the Accu-Chek Customer Service Center are at your service!  
Toll-free number 0800 4466800 (Mon–Fri, 08:00–18:00 hrs).  
Or visit us online at [www.accu-chek.de](http://www.accu-chek.de)



[www.accu-chek.de](http://www.accu-chek.de)  
Roche Diagnostics Deutschland GmbH  
Sandhofer Straße 116  
68305 Mannheim

**ACCU-CHEK®**