

Testing for blood glucose



1 Removing the test strip

Push a test strip upwards with slight pressure from the front or back. With this test strip you can also touch the upper side.



2 Inserting a test strip

Insert the test strip into the test strip slot in the direction of the arrow. If you switch on the device beforehand, you will automatically activate illumination.



3 Applying blood

Touch the drop of blood with the yellow edge of the test strip and wait until the "Measurement in progress" message appears.



4 Ejecting the test strip

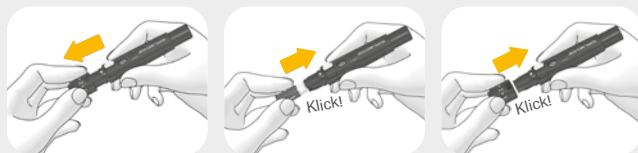
Remove the test strip by activating the test strip ejector button or by pulling the test strip out.



For further instructions on handling please watch the product video at www.accu-chek.de/guide or read the package insert.

Preparation

Insert lancet drum



1. Remove cap

2. Insert drum

3. Replace cap



Rotate the cap until the marking shows the desired penetration depth.

Obtaining blood

Just 1 click!

Only 1 click
for priming and
triggering



Press release button down completely to take a blood sample.

Next step

Preparing and removing the lancet drum



1. First turn lever downwards to stop, then back in upwards direction.

2. For removal, pull off cap and pull out the drum.

Unused drum



Used drum

Attention: do not remove the lancet drum until all the lancets have been used. Once removed, the drum cannot be reinserted for hygienic reasons.

ACCU-CHEK, ACCU-CHEK FASTCLIX and ACCU-CHEK GUIDE are Roche trademarks.

© 2021 Roche Diabetes Care. All rights reserved.

accu-chek.de

Roche Diabetes Care Deutschland GmbH

Sandhofer Straße 116

68305 Mannheim